

Fit Series - DAP

FSDAP

Parts Manual

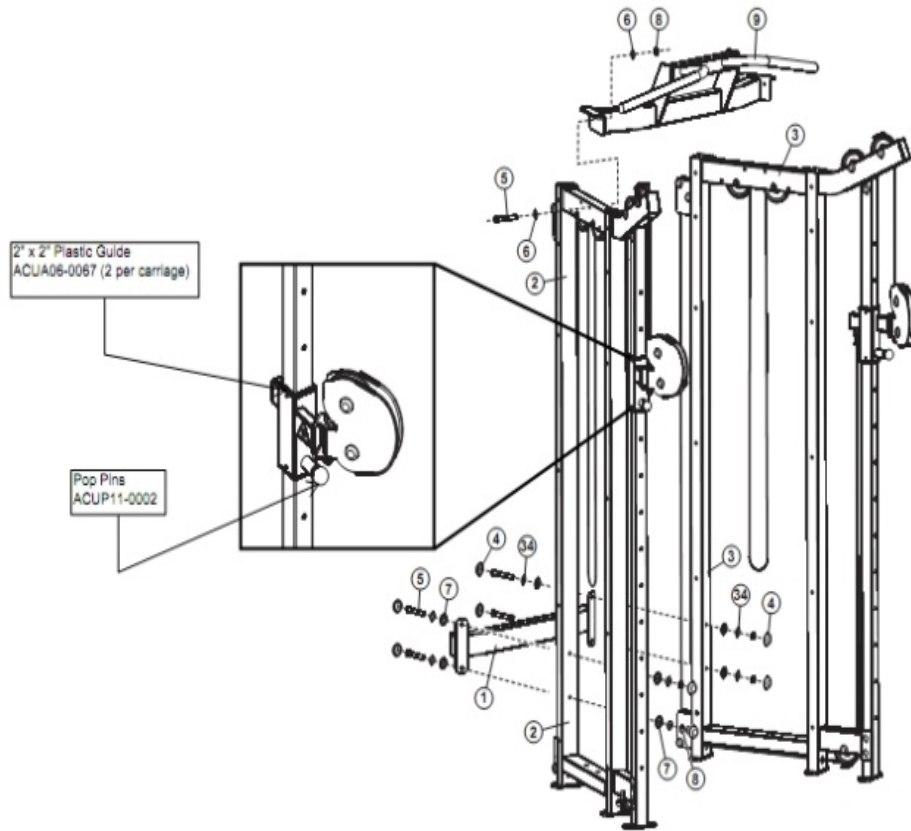
10/20/2020 5:14:45 AM



Table of Contents

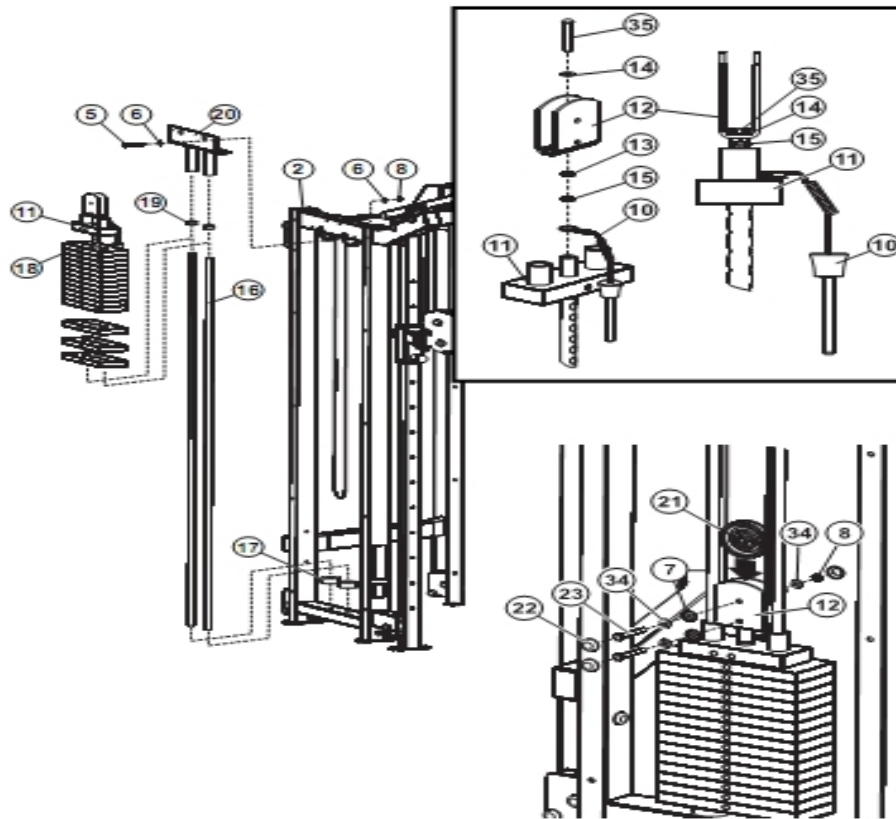
[Component Assembly 1](#).....3
[Component Assembly 2](#).....4
[Component Assembly 3](#).....6
[Miscellaneous](#).....7

Component Assembly 1



Ref #	Part Number	Qty	Description
1	ACUAP04-0734PLT	1	Painted Assembly, Rear CRS Support FSDAP (Plate)
1	ACUAP04-0734WHT	1	NLA: PTD ASSY, REAR CRS SPPRT FSDAP (WHT)
2	ACUAP04-0730LPLT	1	Painted Assembly, Tower, FSDAP (Plate)
2	ACUAP04-0730LWH T	1	NLA: PTD ASSY, TOWER, FSDAP (WHT)
3	ACUAP04-0730RPLT	1	Painted Assembly, Tower, FSDAP (Plate)
3	ACUAP04-0730RWH T	1	NLA: PTD ASSY, TOWER, FSDAP (WHT)
4	ACUP06-0021WHT	8	Cap, Right-20 White
4	ACUP06-0021PLAT	8	Platinum Right Cap
5	ACUDA1C03806716 NU	12	3/8 X 67MM Bolt
6	3102514	16	Hardware: Flat Washer 3/8" ID
7	ACUP05-0009	16	3/8 Right Washer
8	ACUDB2E03807200 U	16	Hardware: Nylon Nut - 3/8 X 7.2T
9	ACUAP04-0733WHT	1	Painted Assembly, Top CRS Support FSDAP (White)
9	ACUAP04-0733PLT	1	PTD ASSY, TP CRS SPPRT FSDAP (PLT)
34	ACUDC125010020U	16	Washer, Flat 3/8 ID SAE BZ/ 25X10X2.0

Component Assembly 2



Ref #	Part Number	Qty	Description
2	ACUAP04-0730LWHT	1	NLA: PTD ASSY, TOWER, FSDAP (WHT)
2	ACUAP04-0730LPLT	1	Painted Assembly, Tower, FSDAP (Plate)
5	ACUDA1C03806716NU	12	3/8 X 67MM Bolt
6	3102514	16	Hardware: Flat Washer 3/8" ID
7	ACUP05-0009	16	3/8 Right Washer
8	ACUDB2E03807200U	16	Hardware: Nylon Nut - 3/8 X 7.2T
10	ACUA11-0060	2	Pin, Weight Selector
11	ACUAP10-0053	2	Painted Assembly, Head Plate 15 Hole
12	ACUP02-0892	2	Bracket, Center Pulley 3-3/4 (BR3)
13	ACUDBIE01208513U	2	1/2-13 UNC X T8.5 NUT
14	ACUDC420013030B	2	Hardware: Washer, Lock 1/2 ID BZ
15	ACUP05-0093	2	1/2-13 Flange Nut
16	ACUA01-2375	4	Guide Rod, 3/4 11 GA X 74 (Chrome Plated)
18	ACU7935201	30	Assembly, Weight Plate, 10LB, Casteel
19	ACUA05-0212	4	Shaft Collar, 13-16 ID Zinc
20	ACUP04-0732PLT	2	Weldment, Guide Rod Support (Plate)
20	ACUP04-0732WHT	2	WLDMT, GUIDE ROD SPPRT (WHT)
21	ACUP06-0051	2	Pulley, 3-1/2 OD X 3/8 ID X 1
22	ACUP06-0021BLK	8	Cap, RH-20 Black

Ref #	Part Number	Qty	Description
23	ACUDA1C03804616 NU	4	3/8-16 X 46MM UNS HEX FHB G2 ZN
34	ACUDC125010020U	16	Washer, Flat 3/8 ID SAE BZ/ 25X10X2.0
35	ACUDAEC01205016 NB	2	1/2-13 X 50MM HXS BUT CS G8 BO

Component Assembly 3

Dual Adjustable Pulley

1. Assembly Instructions

8. SHROUD ASSEMBLY:

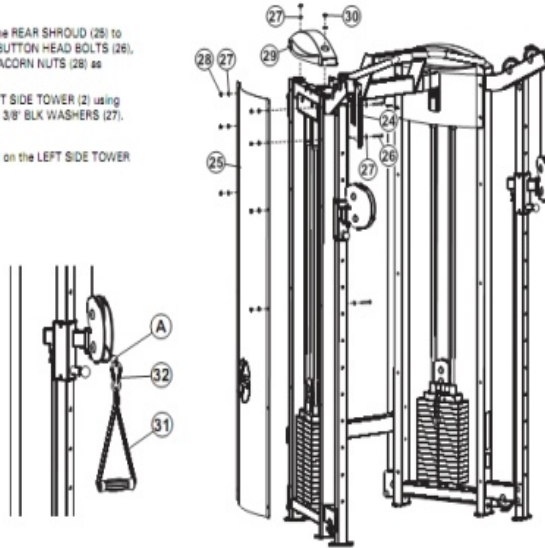
SECURELY assemble the FRONT SHROUD (24) and the REAR SHROUD (25) to the LEFT SIDE TOWER (2) using twelve 3/8 X 90mm BUTTON HEAD BOLTS (26), twenty-four 3/8" BLK WASHERS (27) and twelve 3/8" ACORN NUTS (28) as shown.

SECURELY assemble the TOWER CAP (29) to the LEFT SIDE TOWER (2) using two 3/8 X 12mm BUTTON HEAD BOLTS (30) and two 3/8" BLK WASHERS (27).

Repeat these steps on the RIGHT SIDE TOWER (3).

9. Assemble one SEWN HANDLE (31) to the CABLE and on the LEFT SIDE TOWER (2), using one SNAP LINK (32) as shown.

Repeat this step on the RIGHT SIDE TOWER (3).



Ref #	Part Number	Qty	Description
24	ACU10-0231	2	Front Shroud
25	ACU10-0228	2	Rear Shroud (FSLR)
26	ACUDAEC03809016 NB	24	Button HD Alle Screw-3/8X90L
27	ACUDC125010020B	52	Hardware: Washer, Flat 3/8 Id SAE BZ
28	ACUA05-0443	24	Nut, Acorn 3/8-16 BZ
29	ACUAP06-0333	2	Assembly, Fit Series, Tower Cap
30	ACUDAEC03801216 NB	4	NLA: 3/8-16 X 12MM HXS BUT CS G8 BO
31	ACUP12-0052	2	Handle, CM/MJ Short Strap
32	ACUDI1080080U	2	Snap Link

Miscellaneous

Ref #	Part Number	Qty	Description
17	ACUA06-0304	4	Cushion, Weight Stack 3/4 ID
33	ACUDA1C03804316 NU	4	HEX Bolt - 3/8 X 43L
36	ACUMD000132	2	Label, Weight Stack 1-21
-	ACUHB-FSDAPWHT	1	HARDWARE AND ACCESSORY BAG WHT
-	ACUP13-0100	2	Cable, SE, NB2-TP1, T2X
-	ACUP04-0731L	1	Weldment, Front Upright (Chrome Plated)
-	ACUP04-0731R	1	Weldment, Front Upright (Chrome Plated)
-	ACUP06-0286	1	Grip, 1 X 15 Closed End
-	ACUAP04-0729	1	Painted Assembly, FSDAP, Swivel SPP Right Lift (Black)
-	ACUAP04-0728	1	Painted Assembly, FSDAP, Swivel Support Right (Bla
-	ACUHB-FSDAPPLT	1	Hardware And Accessory Bag Plate
-	ACUMCPG-536	1	Wall Chart, FSDAP

